

THIRD AMENDED PETITION FOR CREATION OF
EMERGENCY SERVICES DISTRICT

2021 JUL 22 PM 3:24
IN THE COMMISSIONER'S COURT
COOKE COUNTY

THE STATE OF TEXAS

§
§
§
§
§

IN THE COMMISSIONER'S COURT

OF

COUNTY OF COOKE

COOKE COUNTY, TEXAS

TO THE HONORABLE COUNTY JUDGE AND COMMISSIONERS OF SAID COURT:

COMES NOW 100 or more qualified voters who own taxable real property in Cooke County, Texas pursuant to Texas Health & Safety Code Section 775.011, requesting the creation of an Emergency Services District and would respectfully show the following:

I.

That the proposed Cooke County Emergency Services District No. 1 (the "District") will be created and operated under the provisions of Article III, Section 48-3 of the Constitution of Texas and Chapter 775 of the Health & Safety Code of the State of Texas.

II.

That the name of the proposed District shall be 'COOKE COUNTY EMERGENCY SERVICES DISTRICT NO. 1.'

III.

That the area of the District does overlap with any existing emergency services district and will include portions of the City of Gainesville Fire District and the City of Gainesville extraterritorial jurisdiction of Gainesville, Texas. The boundaries of the District are more particularly described by the description attached as **Exhibit A**, which is attached hereto and incorporated herein for all purposes, and generally shown on the attached maps in **Exhibit B**.

IV.

The District will provide services in response to any emergency situation in accordance with the authority granted to emergency services districts under Chapter 775 of the Texas Health & Safety Code, including but not limited to the following services:

1. Fire Fighting services;
2. Fire Prevention services;
3. Search and Rescue services; and
4. Emergency Medical services.

V.

The creation of the District complies with Sections 775.020 and 775.0205 of the Texas Health & Safety Code. None of the land encompassed within the District is now included within any other Emergency Services District.

VI.

That Dennis Engels, who resides at 907 Kiowa Drive West, Lake Kiowa, Cooke County, Texas 76240 and Barbara Fox who resides at 1003 Kiowa Drive East, Lake Kiowa, Cooke County, Texas 76240 petitioners herein agree and obligate themselves to pay the cost incident to the formation of the District, including the costs of publishing notices, election costs, and other necessary and incidental expenses, such cost not to exceed one hundred fifty (\$150.00) dollars.

VII.

The City of Gainesville, Texas is the only municipality whose consent must be obtained under Section 775.014 of the Texas Health & Safety Code.

VIII.

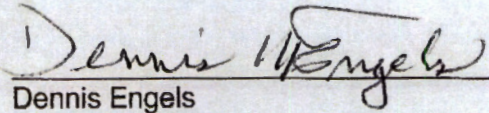
The signatures required by the Texas Health & Safety Code, Section 775.011, for the creation of Cooke County Emergency Services District No. 1 are attached on **Exhibit C** respectively.

WHEREFORE, PREMISES CONSIDERED, Petitioners' pray that such notices be issued by the County Clerk of Cooke County as required by law; that a public hearing be held on this second amended petition in the county; and, that upon such hearing, the Commissioners Court of Cooke County grant said petition and call a special election regarding the creation of the

District on the next authorized uniform election date that allows sufficient time to comply with other requirements of law.

RESPECTFULLY SUBMITTED this 22nd day of July, 2021.

PETITIONERS:


Dennis Engels

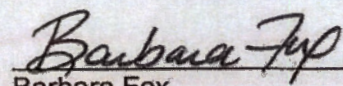

Barbara Fox

EXHIBIT A
DESCRIPTION OF PROPOSED COOKE COUNTY
EMERGENCY SERVICES DISTRICT NO. 1
BOUNDARY DESCRIPTION UTILIZING GPS COORDINATES
AND LOCAL ROAD DESCRIPTIONS

Description of the Proposed Cooke County

Emergency Services District #1

Boundary description of Cooke County Emergency Services District (ESD) Number 1 Utilizing GPS Coordinates and local road descriptions.

The area of the addition to the ESD is described as follows:

1. N 33.641363, W -96.943526 then west to a point
2. N 33.641314, W -96.951903 then west to a point
3. N 33.641095, W -96.961846 then west to a point
4. N 33.64113, W -96.970518 then south to a point
5. N 33.637835, W -96.970576 then west to a point
6. N 33.637886, W -96.974733 then south to a point
7. N 33.635762, W -96.974926 then west to a point
8. N 33.635749, W -96.981112 then west to a point
9. N 33.635753, W -96.9815 then west to a point
10. N 33.635872, W -96.983434 then west to a point
11. N 33.635789, W -96.982215 then south to a point
12. N 33.632359, W -96.983514 then west to a point
13. N 33.631993, W -96.990654 then west to a point
14. N 33.63199, W -96.992016 then north to a point
15. N 33.633341, W -96.992143 then west to a point
16. N 33.633539, W -96.997599 then south to a point
17. N 33.632106, W -96.997578 then west to a point
18. N 33.63227, W -97.002465 then west to a point
19. N 33.632553, W -97.009009 then south east to a point
20. N 33.632313, W -97.008908 then west to a point
21. N 33.632362, W -97.010086 then north to a point
22. N 33.632729, W -97.0101 then west to a point
23. N 33.632831, W -97.011062 then north east to a point
24. N 33.633475, W -97.010711 then west to a point
25. N 33.633589, W -97.14982 then west to a point
26. N 33.633598, W -97.016733 then west to a point
27. N 33.633557, W -97.017212 then west to a point
28. N 33.633398, W -97. 017994 then south west to a point
29. N 33.633206, W -97.01838 then south to a point
30. N 33.631521, W -97.018381 then west to a point
31. N 33.63166, W -97.022685 then south to a point
32. N 33.629827, W -97.02282 then west to a point
33. N 33.629938, W -97.027092 then south to a point
34. N 33.627316, W -97.027262 then west to a point
35. N 33.627308, W -97.034742 then west to a point
36. N 33.627322, W -97.039597 then south to a point

37. N 33.619654, W -97.039875 then west to a point
38. N 33.619658, W -97.048394 then north to a point
39. N 33.625654, W -97.04843 then west to a point
40. N 33.625584, W -97.057274 then south west to a point
41. N 33.62286, W -97.058005 then west to a point
42. N 33.622674, W -97.067659 then south to a point
43. N 33.619151, W -97.067758 then west to a point
44. N 33.619202, W -97.06845 then west to a point
45. N 33.619329, W -97.071926 then west to a point
46. N 33.619793, W -97.076374 then south to a point
47. N 33.61951, W -97.076367 then south to a point
48. N 33.61883, W -97.076064 then west to a point
49. N 33.618875, W -97.082442 then south to a point
50. N 33.615534, W -97.082496 then west to a point
51. N 33.615637, W -97.084482 then south to a point
52. N 33.611947, W -97.084472 then west to a point
53. N 33.611885, W -97.087579 then south to a point
54. N 33.609347, W -97.087634 then west to a point
55. N 33.609351, W -97.089305 then south to a point
56. N 33.608932, W -97.089293 then west to a point
57. N 33.608927, W -97.092316 then west to a point
58. N 33.608887, W -97.094682 then west to a point
59. N 33.608842, W -97.096337 then south to a point
60. N 33.607735, W -97.096178 then south to a point
61. N 33.604137, W -97.096205 then south to a point
62. N 33.598171, W -97.096253 then south to a point
63. N 33.595307, W -97.096294 then south to a point
64. N 33.590358, W -97.096337 then west to a point
65. N 33.590357, W -97.101749 then south to a point
66. N 33.583034, W -97.10136 then west to a point
67. N 33.583013, W -97.107171 then west to a point
68. N 33.58302, W -97.113281 then west to a point
69. N 33.582968, W -97.11792 then south, south east to a point
70. N 33.58189, W -97.117382 then south to a point
71. N 33.580359, W -97.11734 then east, south east to a point following creek and property lines
72. N 33.579575, W -97.115814 then south, south east to a point
73. N 33.578777, W -97.115576 then south west to a point
74. N 33.577588, W -97.116677 then east, south east to a point
75. N 33.576507, W -97.114023 then east, south east to a point
76. N 33.575965, W -97.111111 then south to a point
77. N 33.575211, W -97.110999 then south west to a point
78. N 33.574371, W -97.112654 then west, north west to a point

79. N 33.574592, W -97.113829 then south, south west to a point
80. N 33.57376, W -97.114092 then east south east to a point
81. N 33.57325, W -97.113258 then east to a point
82. N 33.573061, W-97.112435 then north east to a point
83. N 33.573877, W -97.111146 then south east to a point
84. N 33.57324, W -97.110288 then south west to a point
85. N 33.572244, W -97.111981 then south west to a point
86. N 33.571805, W -97.112831 then south east to a point
87. N 33.570662, W -97.112143 then north east to a point
88. N 33.571266, W -97.110685 then east to a point
89. N 33.571381, W -97.10984 then south east to a point
90. N 33.570125, W -97.109054 then east, south east to a point
91. N 33.569273, W -97.107399 then south west to a point
92. N 33.568448, W -97.108959 then south west to a point
93. N 33.567627, W -97.1097 then west, south west to a point
94. N 33.567231, W -97.11103 then south, south west to a point
95. N 33.56642, W -97.111523 then south, south east to a point
96. N 33.565312, W -97.110734 then south, south west to a point
97. N 33.563081, W -97.111196 then south, south east to a point
98. N 33.561821, W -97.110575 then south west to a point
99. N 33.560834, W -97.111582 then south, southeast to a point
100. N 33.559543, W -97.110848 then south, south east to a point
101. N 33.55892, W -97.10874 then south to a point
102. N 33.55788, W -97.108555 then east, south east to a point
103. N 33.557187, W -97.107043 then east to a point
104. N 33.556833, W -97.105536 then southwest to a point
105. N 33.555917, W -97.10666 then south, southeast to a point
106. N 33.554804, W -97.106082 then southeast to a point
107. N 33.553982, W -97.104335 then southeast to a point
108. N 33.552496, W -97.1034 then east to a point
109. N 33.552354, W -97.102425 then northeast to a point
110. N 33.552801, W -97.101402 then east to a point
111. N 33.552749, W -97.09897 then south east to a point
112. N 33.551094, W -97.097971 then south to a point
113. N 33.548923, W -97.098396 then south to a point
114. N 33.547588, W -97.09828 then west, south west to a point
115. N 33.546901, W -97.099757 then west to a point
116. N 33.546723, W -97.101838 then west to a point
117. N 33.546212, W -97.103226 then west to a point
118. N 33.546136, W -97.105373 then south west to a point
119. N 33.545418, W -97.106061 then south to a point
120. N 33.543842, W-97.106069 then east to a point
121. N 33.543784, W -97.10212 then south, southeast to a point

122. N 33.541596, W -97.100296 then west to a point
123. N 33.541722, W -97.101407 then south to a point
124. N 33.540445, W -97.102024 then south to a point
125. N 33.53925, W - 97.101708 then south, south west to a point
126. N 33.538225, W -97.102363 then south, south east to a point
127. N 33.537829, W -97.101588 then following creek and property lines to a point
128. N 33.53839, W -97.099347 then south east to a point
129. N 33.537711, W -97.098753 then south west to a point
130. N 33.537484, W -97.099331 then south east to a point
131. N 33.53483, W -97.097883 then south to a point
132. N 33.534906, W -97.097212 then north west to a point
133. N 33.534548, W -97.097232 then south to a point
134. N 33.532285, W -97.097284 then south to a point
135. N 33.531497, W -97.097028 then south to a point
136. N 33.529205, W -97.097037 then east to a point
137. N 33.528969, W -97.079602 then east to a point
138. N 33.528939, W -97.077974 then south to a point
139. N 33.525062, W -97.078009 then east to a point
140. N 33.524932, W -97.068155 then south to a point
141. N 33.5213, W -97.068131 then east to a point
142. N 33.521342, W -97.06614 then east to a point
143. N 33.521423, W -97.063836 then south to a point
144. N 33.520843, W -97.063613 then east to a point
145. N 33.52075, W -97.060721 then east to a point
146. N 33.520835, W -97.059012 then south to a point
147. N 33.518191, W -97.058917 then east to a point
148. N 33.518122, W -97.054382 then south to a point
149. N 33.512314, W -97.054298 then east to a point
150. N 33.512242, W -97.052063 then east to a point
151. N 33.512155, W -97.051932 then east to a point
152. N 33.512733, W -97.048867 then east to a point
153. N 33.512666, W -97.043483 then south to a point
154. N 33.508683, W -97.043423 then south to a point
155. N 33.506899, W -97.043484 then south to a point
156. N 33.50539, W -97.043861 then south to a point
157. N 33.504136, W -97.043924 then east to a point
158. N 33.503724, W -97.036789 then north to a point
159. N 33.505176, W -97.036802 then east to a point
160. N 33.504917, W -97.032502 then south to a point
161. N 33.504604, W -97.032514 then east to a point
162. N 33.504688, W -97.028751 then north to a point
163. N 33.506323, W -97.028822 then east to a point
164. N 33.50639, W -97.023808 then north to a point

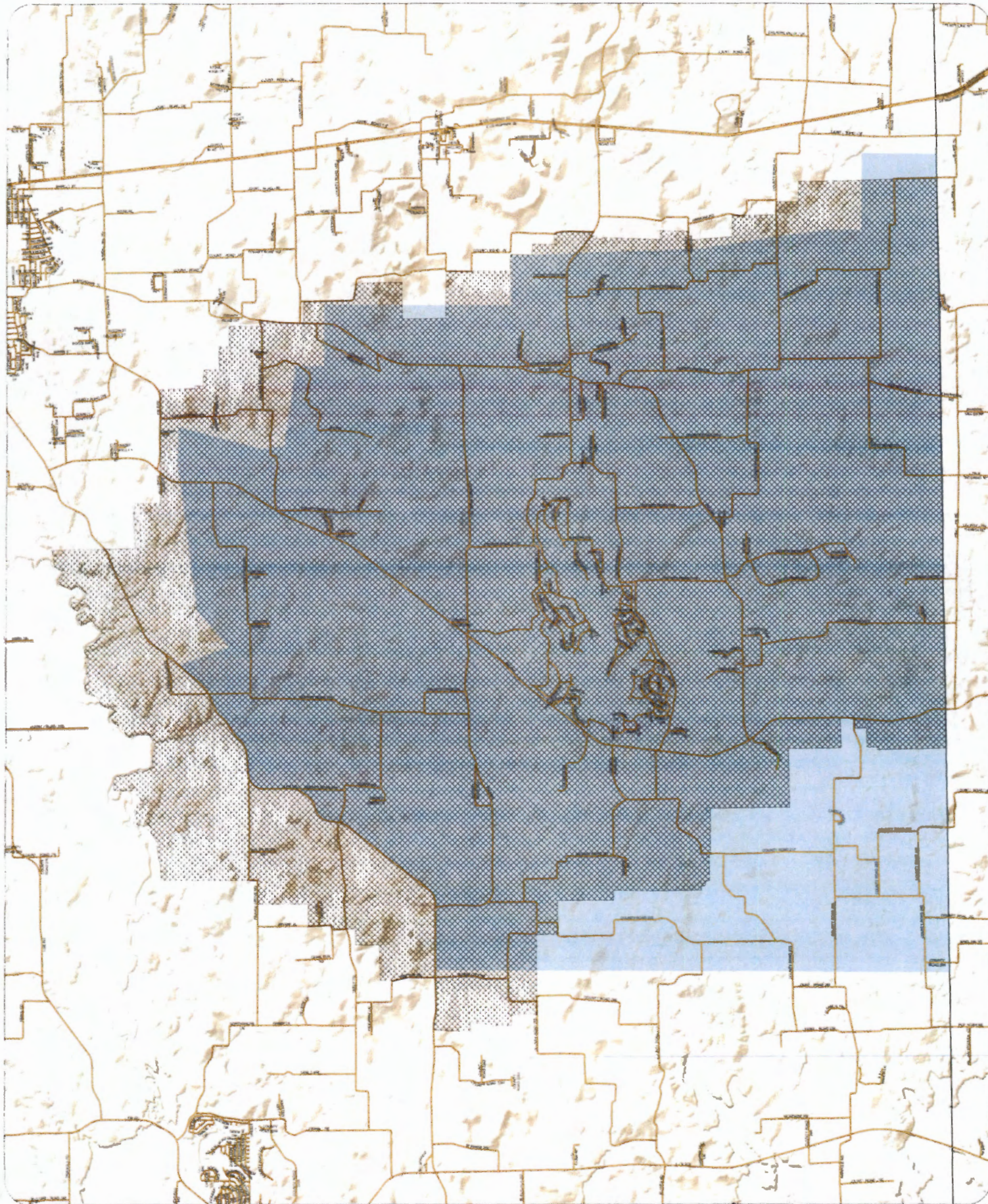
165. N 33.509455, W -97.023806 then north to a point
166. N 33.512881, W -97.023759 then north to a point
167. N 33.513979, W -97.023806 then north to a point
168. N 33.519434, W -97.023709 then east to a point
169. N 33.519445, W -97.019546 then east to a point
170. N 33.519408, W -97.019694 then north to a point
171. N 33.524941, W -97.019455 then east to a point
172. N 33.524934, W -97.013982 then east to a point
173. N 33.52485, W -97.008608 then north to a point
174. N 33.526484, W -97.0086 then east to a point
175. N 33.526382, W -97.004277 then east to a point
176. N 33.526289, W -97.000315 then east to a point
177. N 33.526288, W -96.991476 then north to a point
178. N 33.526932, W -96.991351 then east to a point
179. N 33.52696, W -96.990657 then north to a point
180. N 33.527762, W -96.990517 then east to a point
181. N 33.527762, W -96.989806 then north to a point
182. N 33.532129, W -96.989765 then north east to a point
183. N 33.532276, W -96.989507 then north to a point
184. N 33.539492, W -96.989395 then east to a point
185. N 33.539499, W -96.983407 then east to a point
186. N 33.539462, W -96.974056 then north to a point
187. N 33.548941, W -96.974083 then east to a point
188. N 33.548964, W -96.96704 then east to a point
189. N 33.548962, W -96.963869 then north to a point
190. N 33.553863, W -96.963981 then east to a point
191. N 33.553875, W -96.962617 then east to a point
192. N 33.553726, W -96.961222 then south to a point
193. N 33.552165, W -96.961228 then east to a point
194. N 33.552163, W -96.958807 then south to a point
195. N 33.549032, W -96.95882 then east to a point
196. N 33.549007, W -96.956808 then south to a point
197. N 33.548578, W -96.956815 then east to a point
198. N 33.548597, W -96.953297 then east to a point
199. N 33.548642, W -96.949133 then east to a point
200. N 33.548719, W -96.943388 then north on county line to beginning point.

EXHIBIT B

MAPS OF PROPOSED COOKE COUNTY EMERGENCY SERVICES DISTRICT NO. 1



COOKE COUNTY








Indian Creek VFD District

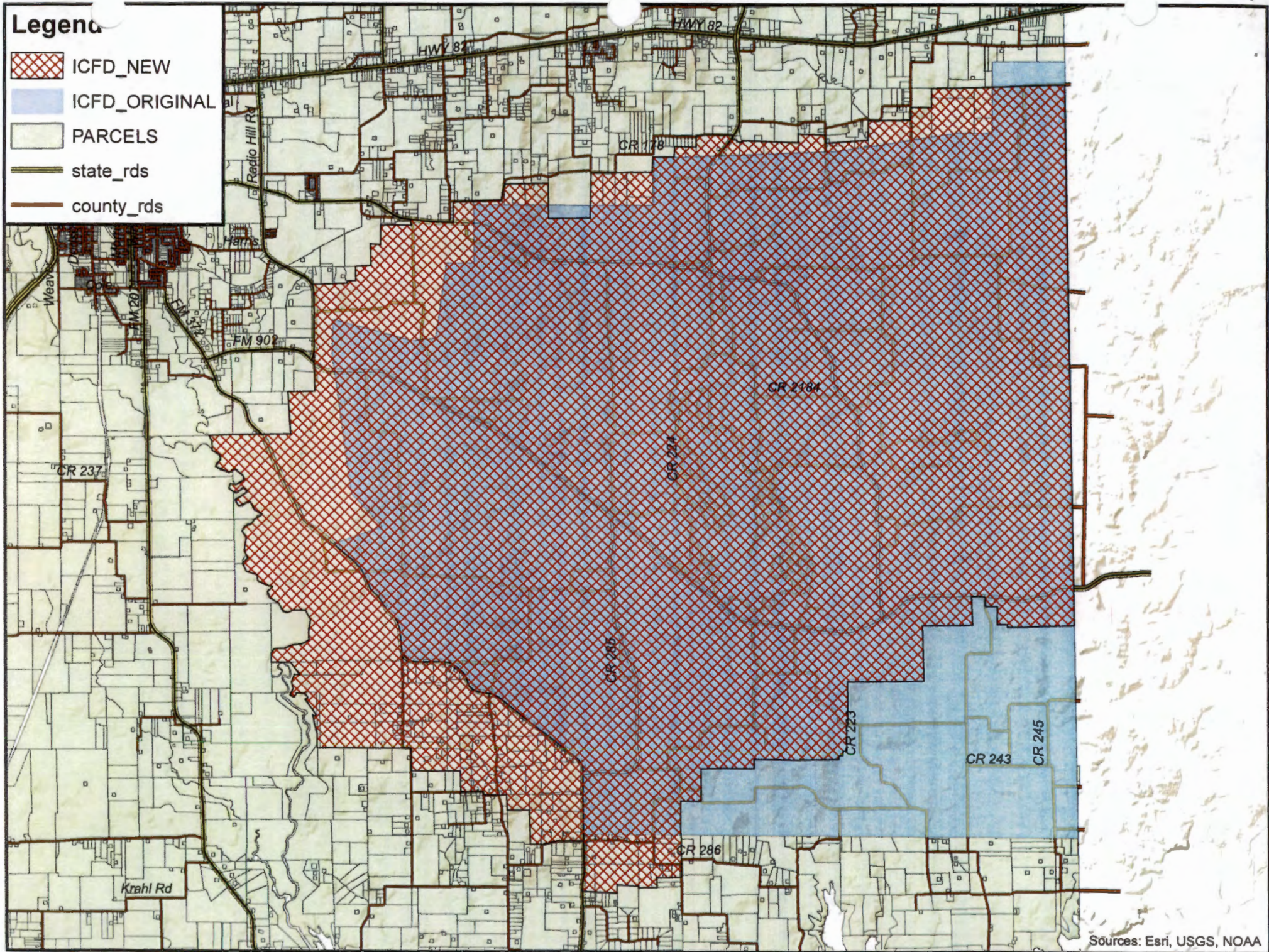
08/29/2021



The printed or digital information contained on this map is for informational purposes only. It does not constitute a contract, warranty, or any other legal obligation. The user assumes all responsibility for the accuracy and completeness of the information shown on this map. The user shall not rely on this map for any purpose other than that for which it was prepared.

Legend

-  ICFD_NEW
-  ICFD_ORIGINAL
-  PARCELS
-  state_rds
-  county_rds



Legend

-  ICFD_NEW
-  ICFD_ORIGINAL
-  PARCELS
-  state_rds
-  county_rds
-  ICFD_NEW_POINTS

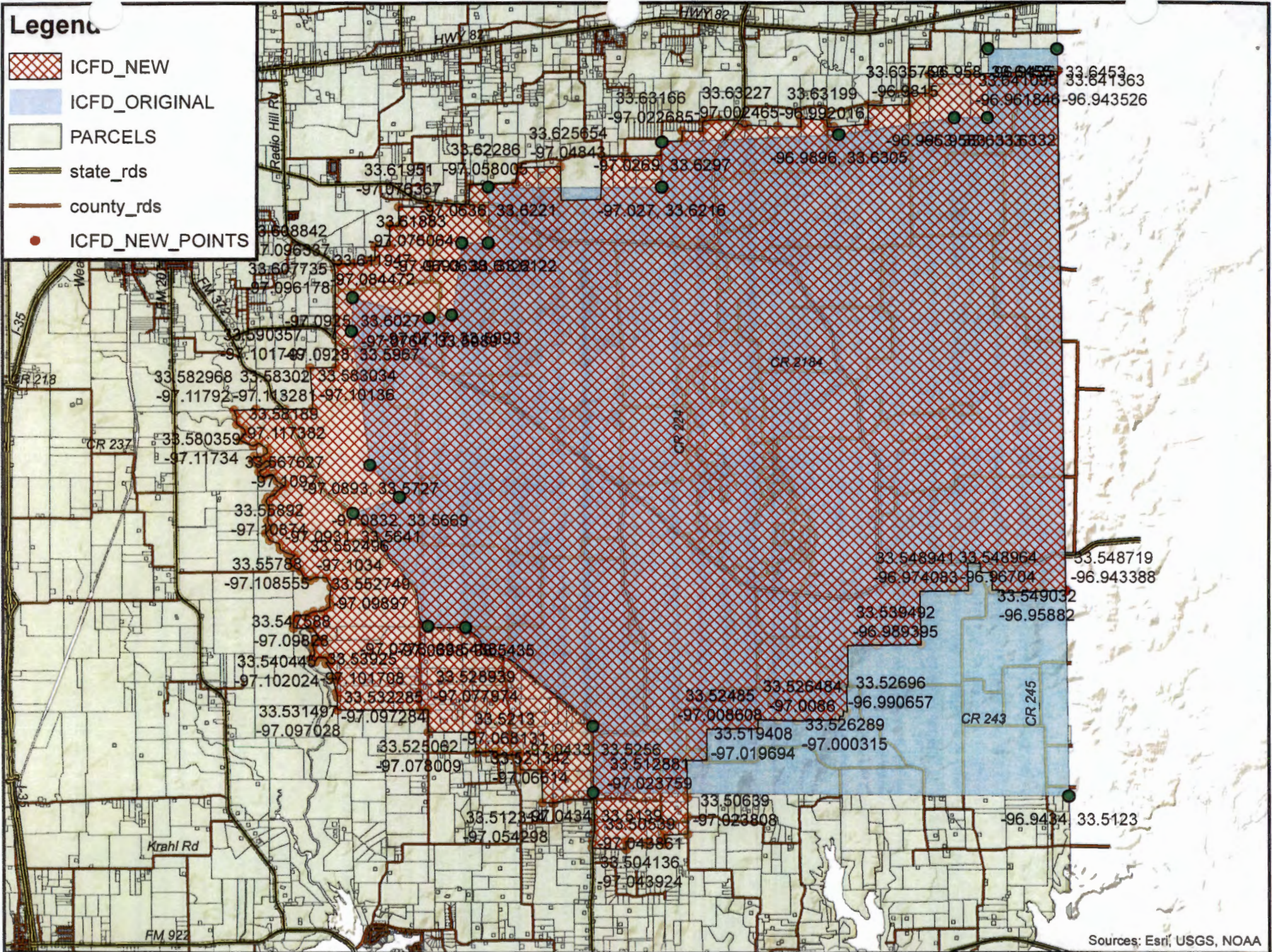


EXHIBIT C

**REAL PROPERTY OWNERS QUALIFIED TO VOTE IN COOKE COUNTY FOR PROPOSED
COOKE COUNTY EMERGENCY SERVICES DISTRICT NO. 1**