

SECOND AMENDED PETITION FOR CREATION OF  
EMERGENCY SERVICES DISTRICT

2021 JAN -6 AM 11:12

THE STATE OF TEXAS

§  
§  
§  
§  
§

IN THE COMMISSIONER'S COURT

OF

COUNTY OF COOKE

COOKE COUNTY, TEXAS

COOKE COUNTY  
COOKE COUNTY

TO THE HONORABLE COUNTY JUDGE AND COMMISSIONERS OF SAID COURT:

COMES NOW 100 or more qualified voters who own taxable real property in Cooke County, Texas pursuant to Texas Health & Safety Code Section 775.011, requesting the creation of an Emergency Services District and would respectfully show the following:

I.

That the proposed Cooke County Emergency Services District No. 1 (the "District") will be created and operated under the provisions of Article III, Section 48-3 of the Constitution of Texas and Chapter 775 of the Health & Safety Code of the State of Texas.

II.

That the name of the proposed District shall be 'COOKE COUNTY EMERGENCY SERVICES DISTRICT NO. 1.'

III.

That the area of the District does overlap with any existing emergency services district and will include portions of the City of Gainesville Fire District and the City of Gainesville extraterritorial jurisdiction of Gainesville, Texas. The boundaries of the District are more particularly described by the description attached as Exhibit A, which is attached hereto and incorporated herein for all purposes, and generally shown on the attached sketch in Exhibit B.

IV.

The District will provide services in response to any emergency situation in accordance with the authority granted to emergency services districts under Chapter 775 of the Texas Health & Safety Code, including but not limited to the following services:

1. Fire Fighting services;
2. Fire Prevention services;
3. Search and Rescue services; and
4. Emergency Medical services.

V.

The creation of the District complies with Sections 775.020 and 775.0205 of the Texas Health & Safety Code. None of the land encompassed within the District is now included within any other Emergency Services District.

VI.

That Dennis Engels, who resides at 907 Kiowa Drive West, Lake Kiowa, Cooke County, Texas 76240 and Barbara Fox who resides at 1003 Kiowa Drive East, Lake Kiowa, Cooke County, Texas 76240 petitioners herein agree and obligate themselves to pay the cost incident to the formation of the District, including the costs of publishing notices, election costs, and other necessary and incidental expenses, such cost not to exceed one hundred fifty (\$150.00) dollars.

VII.

The City of Gainesville, Texas is the only municipality whose consent must be obtained under Section 775.014 of the Texas Health & Safety Code.

VIII.

The signatures required by the Texas Health & Safety Code, Section 775.011, for the creation of Cooke County Emergency Services District No. 1 are attached on **Exhibit C** respectively.

WHEREFORE, PREMISES CONSIDERED, Petitioners' pray that such notices be issued by the County Clerk of Cooke County as required by law; that a public hearing be held on this second amended petition in the county; and, that upon such hearing, the Commissioners Court of Cooke County grant said petition and call a special election regarding the creation of the

District on the next authorized uniform election date that allows sufficient time to comply with other requirements of law.

RESPECTFULLY SUBMITTED this 6<sup>th</sup> day of January, 2021.

PETITIONERS:

Dennis Engels  
Dennis Engels

Barbara Fox  
Barbara Fox

# EXHIBIT A

---



## Description of the Proposed Cooke County

### Emergency Services District #1

Boundary description of Cooke County Emergency Services District (ESD) Number 1 Utilizing GPS Coordinates and local road descriptions.

The area of the addition to the ESD is described as follows:

1. N 33.641314, W -96.951903 then west to a point
2. N 33.641095, W -96.961846 then west to a point
3. N 33.64113, W -96.970518 then south to a point
4. N 33.637835, W -96.970576 then west to point
5. N 33.637886, W -96.974733 then south to a point
6. N 33.635762, W -96.974926 then west to a point
7. N 33.635749, W -96.981112 then west to a point
8. N 33.653753, W -96.9815 then west to a point
9. N 33.635872, W -96.983434 then west to a point
10. N 33.635789, W -96.982215 then south to a point
11. N 33.632359, W -96.983514 then west to a point
12. N 33.631993, W -96.990654 then west to a point
13. N 33.63199, W -96.992016 then north to a point
14. N 33.633341, W -96.992143 then west to a point
15. N 33.637886, W -96.974733 then south to a point
16. N 33.635762, W -96.974926 then west to a point
17. N 33.635749, W -96.981112 then west to a point
18. N 33.635753, W -96.9815 then west to a point
19. N 33.635789, W -96.982215 then west to a point
20. N 33.635872, W -96.983434 then south to a point
21. N 33.632359, W -96.983514 then west to a point
22. N 33.631993, W -96.990654 then west to a point
23. N 33.63199, W -96.992016 then north to a point
24. N 33.633341, W -96.992143 then west to a point
25. N 33.633539, W -96.997599 then south to a point
26. N 33.632106, W -96.997578 then west to a point
27. N 33.63227, W -97.002465 then west to a point
28. N 33.632553, W -97.009009 then south east to a point
29. N 33.632313, W -97.008908 then west to a point
30. N 33.632362, W -97.010086 then north to a point
31. N 33.632729, W -97.010101 then west to a point
32. N 33.632831, W -97.011062 then north east to a point
33. N 33.633475, W -97.010711 then west to a point
34. N 33.633589, W -97.014982 then west to a point
35. N 33.633598, W -97.016733 then west to a point
36. N 33.633557, W -97.017212 then west to a point

37. N 33.633398, W -97. 017994 then south west to a point
38. N 33.633206, -97.01838 then south to a point
39. N 33.631521, -97.018381 then west to a point
40. N 33.633589, -97.014982 then west to a point
41. N 33.633598, -97.016733 then west to a point
42. N 33.633557, -97.017212 then west to a point
43. N 33.633206, -97.01838 then west to a point
44. N 33.633206, -97.01838, then south to a point
45. N 33.631521, -97.018381 then west to a point
46. N 33.63166, -97.022685 then south to a point
47. N 33.629827, -97.2282 then west to a point
48. N 33.629938, -97.027029 then south to a point
49. N 33.627316, -97.027262 then west to a point
50. N 33.627308, -97.034742 then west to a point
51. N 33.63166, -97.022685 then south to a point
52. N 33.629827, -97.02282 then west to a point
53. N 33.629938, -97.027092 then south to a point
54. N 33.627316, -97.027262 then west to a point
55. N 33.627308, -97.034742 then west to a point
56. N 33.627322, -97.039597 then south to a point
57. N 33.619654, -97.039875 then west to a point
58. N 33.619658, -97.048394 then north to a point
59. N 33.625654, -97.04843 then west to a point
60. N 33.625584, -97.057274 then south west to a point
61. N 33.62286, -97.058005 then west to a point
62. N 33.625584, -97.057274 then south west to a point
63. N 33.62286, -97.058005 then west to a point
64. N 33.622674, -97.067659 then south to a point
65. N 33.619151, -97.067758 then west to a point
66. N 33.619202, -97.06845 then west to a point
67. N 33.619329, -97.071926 then west to a point
68. N 33.619793, -97.076374 then south to a point
69. N 33.61951, -97.076367 then south east to a point
70. N 33.61883, -97.076064 then west to a point
71. N 33.618875, -97.082422 then south to a point
72. N 33.615534, -97.082496 then west to a point
73. N 33.615637, -97.084482 then south to a point
74. N 33.615534, -97.082496 then west to a point
75. N 33.615637, -97.0844482 then south to a point
76. N 33.611947, -97.084472 then west to a point
77. N 33.611885, -97.087579 then south to a point
78. N 33.609347, -97.087634 then west to a point
79. N 33.600351, -97.089305 then south to a point
80. N 33.608932, -97.089293 then west to a point

81. N 33.608927, -97.092316 then west to a point
82. N 33.608887, -97.094682 then west to a point
83. N 33.608842, -97.096337 then south to a point
84. N 33.607735, -97.096178 then south to a point
85. N 33.604137, -97.096205 then south to a point
86. N 33.598171, -97.096253 then south to a point
87. Gainesville Addition
88. Starting point at: FM 902 N 33.595307, W -97.096294 then south to a point
89. N 33.590358, W -97.096337 then west to a point
90. N 33.590357, W -97.101749 then south to a point
91. N 33.583034, W -97.10136 then west to a point
92. N 33.583013, W -97.107171 then west to a point
93. N 33.58302, W -97.113281 then west to a point
94. N 33.582968, W -97.11792 then south, south east to a point
95. N 33.58189, W -97.117382 then south to a point
96. N 33.580359, W -97.11734 then east, south east to a point
97. N 33.579575, W -97.115814 then south, south east to a point
98. N 33.578777, W -97.115576 then south west to a point
99. N 33.577588, W -97.116677 then east, south east to a point
100. N 33.576507, W -97.114023 then east, north east to a point
101. N 33.575965, W -97.111111 then south to a point
102. N 33.575211, W -97.110999 then south west to a point
103. N 33.574371, W -97.112654 then west, north west to a point
104. N 33.574592, W -97.113829 then south, south west to a point
105. N 33.57376, W -97.114092 then east south east to a point
106. N 33.57325, W -97.113258 then east to a point
107. N 33.573061, W -97.112435 then north east to a point
108. N 33.573877, W -97.111146 then south east to a point
109. N 33.57324, W -97.110288 then south west to a point
110. N 33.572244, W -97.111981 then south west to a point
111. N 33.571805, W -97.112831 then south east to a point
112. N 33.570662, W -97.112143 then north east to a point
113. N 33.571266, W -97.110685 then east to a point
114. N 33.571381, W -97.10984 then south east to a point
115. N 33.570125, W -97.109054 then east, south east to a point
116. N 33.569273, W -97.107399 then south west to a point
117. N 33.568448, W -97.108959 then south west to a point
118. N 33.567627, W -97.1097 then west, south west to a point
119. N 33.567231, W -97.11103 then south, south west to a point
120. N 33.56642, W -97.111523 then south, south east to a point
121. N 33.565312, W -97.110734 then south, south west to a point
122. N 33.563081, W -97.11196 then south, south east to a point
123. N 33.561821, W -97.110575 then south west to a point

124. N 33.560834, W -97.10874 then south, south east to a point
125. N 33.559543, W -97.110848 then south, south east to a point
126. N 33.55892, W -97.10874 then south to a point
127. N 33.55788, W -97.108555 then east, south east to the next point
128. N 33.577187, W -97.107043 then east to the next point
129. N 33.556833, W -97.105536 then south west to the next point
130. N 33.555917, W -97.10666 then south, south east to the next point
131. N 33.554804, W -97.106082 then south east to the next point
132. N 33.553982, W -97.104335 then south east to the next point
133. N 33.552496, W -97.1034 then east to the next point
134. N 33.552354, W -97.102425 then north east to the next point
135. N 33.552801, W -97.101402 then east to the next point
136. N 33.552749, W -97.09897 then south east to the next point
137. N 33.551094, W -97.097971 then south to the next point
138. N 33.548923, W -97.098396 then south to the next point
139. N 33.547588, W -97.09828 then west, south west to the next point
140. N 33.546901, W -97.099757 then west to the next point
141. N 33.546723, W -97.101838 then west to the next point
142. N 33.546212, W -97.103226 then west to the next point
143. N 33.546136, W -97.105373 then south west to the next point
144. N 33.545418, W -97.106061 then south to the next point
145. N 33.543842, W -97.106069 then east to a point
146. N 33.543784, W -97.10212 then south, southeast to a point
147. N 33.541722, W -97.101407 then east to the next point
148. N 33.541596, W -97.100296 then south to the next point
149. N 33.540445, W -97.102024 then south to a point
150. N 33.53925, W -97.101708 then south, south west to the next point
151. N 33.538225, W -97.102363 then south, south east to the next point
152. N 33.537829, W -97.101588 then south, south east to the next point
153. N 33.53839, W -97.099347 then south east to the next point
154. N 33.537711, W -97.098753 then south west to the next point
155. N 33.537484, W -97.099331 then south east to the next point
156. N 33.53483, W -97.097883 then south to the next point
157. N 33.534906, W -97.097212 then north west to the next point
158. N 33.534548, W -97.097232 then south to the next point
159. N 33.532285, W -97.097284 then south to the next point
160. N 33.531497, W -97.097028 then south to the next point
161. South Side Starting Point
162. N 33.529205, W -97.097037 then east to the next point
163. N 33.528969, W -97.079602 then east to the next point
164. N 33.528939, W -97.077974 then south to the next point
165. N 33.525062, W -97.078009 then east to the next point
166. N 33.524932, W -97.068155 then south to the next point

167. N 33.5213, W -97.068131 then east to the next point
168. N 33.521342, W -97.06614 then east to the next point
169. N 33.521423, W -97.063836 then south to the next point
170. N 33.520843, W -97.063613 then east to the next point
171. N 33.52075, W -97.060721 then east to the next point
172. N 33.520835, W -97.059012 then south to the next point
173. N 33.518191, W -97.058917 then east to the next point
174. N 33.518122, W -97.054382 then south to the next point
175. N 33.512314, W -97.054298 then east to the next point
176. N 33.512242, W -97.052063 then east to the next point
177. N 33.512155, W -97.051932 then east to the next point
178. N 33.512733, W -97.048867 then east to the next point
179. N 33.512666, W -97.043483 then south to the next point
180. N 33.508683, W -97.043423 then south to the next point
181. N 33.506899, W -97.043484 then south to the next point
182. N 33.50539, W -97.043861 then south to the next point
183. N 33.504136, W -97.043924 then east to the next point
184. N 33.503724, W -97.036789 then north to the next point
185. N 33.504604, W -97.032514 then south to the next point
186. N 33.54917, W -97.032502 then east to the next point
187. N 33.504688, W -97.028751 then north to the next point
188. N 33.506323, W -97.028822 then east to the next point
189. N 33.505176, W -97.035802 then east to the next point
190. N 33.504917, W -97.032502 then south to the next point
191. N 33.504604, W -97.032514 then east to the next point
192. N 33.504688, W -97.028751 then north to the next point
193. N 33.506323, W -97.028822 then east to the next point
194. N 33.50639, W -97.023808 then north to the next point
195. N 33.509455, W -97.023806 then north to the next point
196. N 33.512881, W -97.023759 then north to the next point
197. N 33.513979, W -97.023806 then north to the next point
198. N 33.519434, W -97.023709 then east to the next point
199. N 33.519445, W -97.019546 then east to the next point
200. N 33.519408, W -97.019694 then north to the next point
201. N 33.524941, W -97.019455 then east to the next point
202. N 33.524934, W -97.013982 then east to the next point
203. N 33.52485, W -97.008608 then north to the next point
204. N 33.526484, W -97.0086 then east to the next point
205. N 33.526382, W -97.004277 then east to the next point
206. N 33.526289, W -97.000315 then east to the next point
207. N 33.526288, W -96.991476 then east to the next point
208. N 33.526932, W -96.99135 then east to the next point
209. N 33.52696, W -96.990657 then north to the next point



- 210. N 33.527762, W -96.990517 then north to the next point
- 211. N 33.532129, W -96.989765 then north to the next point
- 212. N 33.526288, W -96.991476 then north to the next point
- 213. N 33.526932, W -96.99135 then east to the next point
- 214. N 33.52696, W -96.990657 then north to the next point
- 215. N 33.527762, W -96.990517 then east to the next point
- 216. N 33.527762, W -96.989806 then north to the next point
- 217. N 33.532129, W -96.989765 then north to the next point
- 218. N 33.532276, W -96.989507 then north to the next point
- 219. N 33.539492, W -96.989395 then east to the next point
- 220. N 33.539499, W -96.983407 then east to the next point
- 221. N 33.539462, W -96.974056 then north to the next point
- 222. N 33.548941, W -96.974083 then east to the next point
- 223. N 33.548964, W -96.96704 then east to the next point
- 224. N 33.548962, W -96.963869 then north to the next point
- 225. N 33.549032, W -96.95882 then east to the next point
- 226. N 33.549007, W -96.956808 then south to the next point
- 227. N 33.548578, W -96.956815 then east to the next point
- 228. N 33.553863, W -96.963981 then east to the next point
- 229. N 33.553875, W -96.962617 then east to the next point
- 230. N 33.553726, W -96.961222 then south to the next point
- 231. N 33.552165, W -96.961228 then east to the next point
- 232. N 33.552163, W -96.958807 then south to the next point
- 233. N 33.549032, W -96.95882 then east to the next point
- 234. N 33.549007, W -96.956808 then south to the next point
- 235. N 33.548597, W -96.953297 then east to the next point
- 236. N 33.548642, W -96.949133 then east to the next point
- 237. N 33.548719, W -96.943388

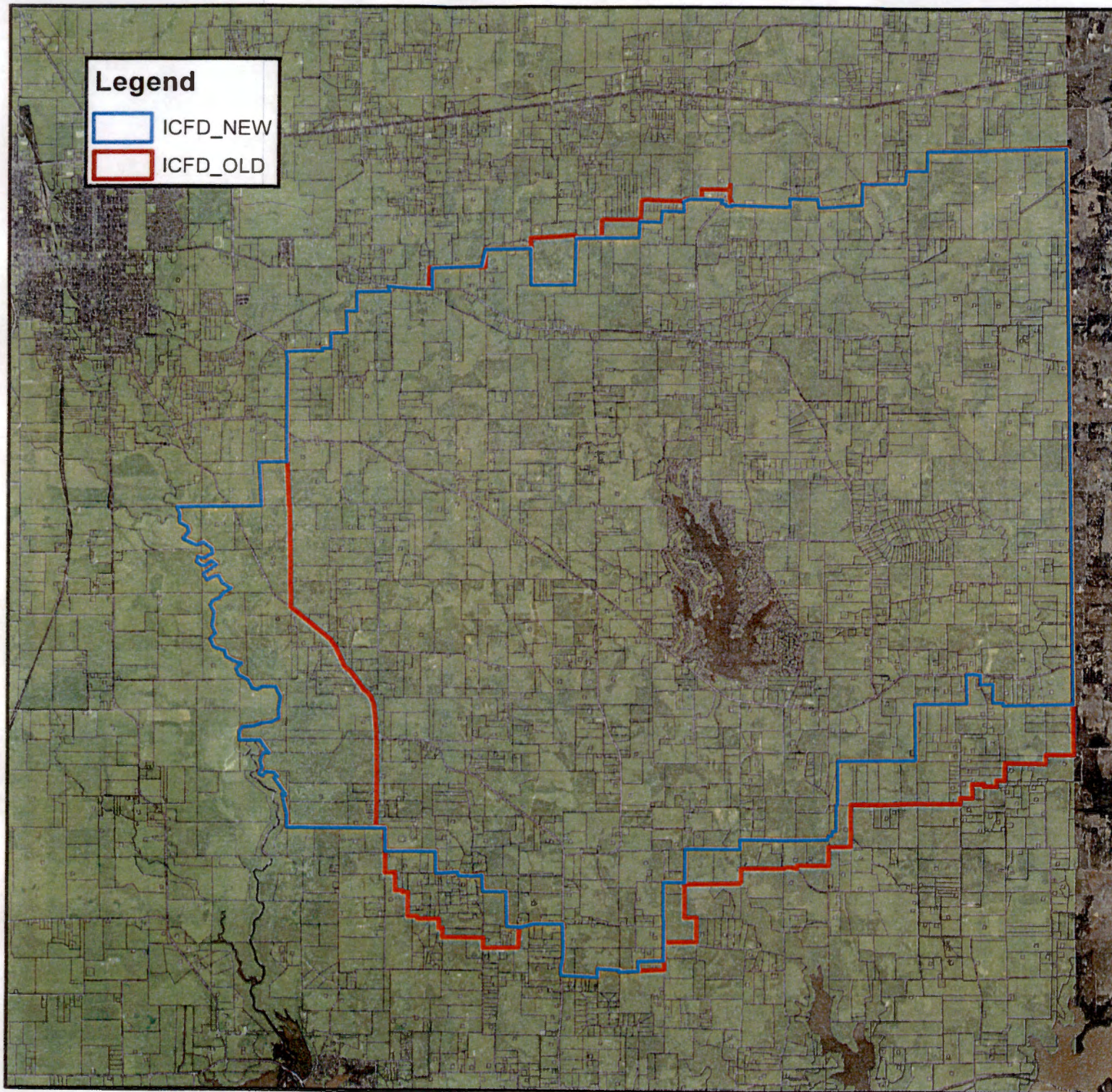
# EXHIBIT B

---



# Legend

- ICFD\_NEW
- ICFD\_OLD





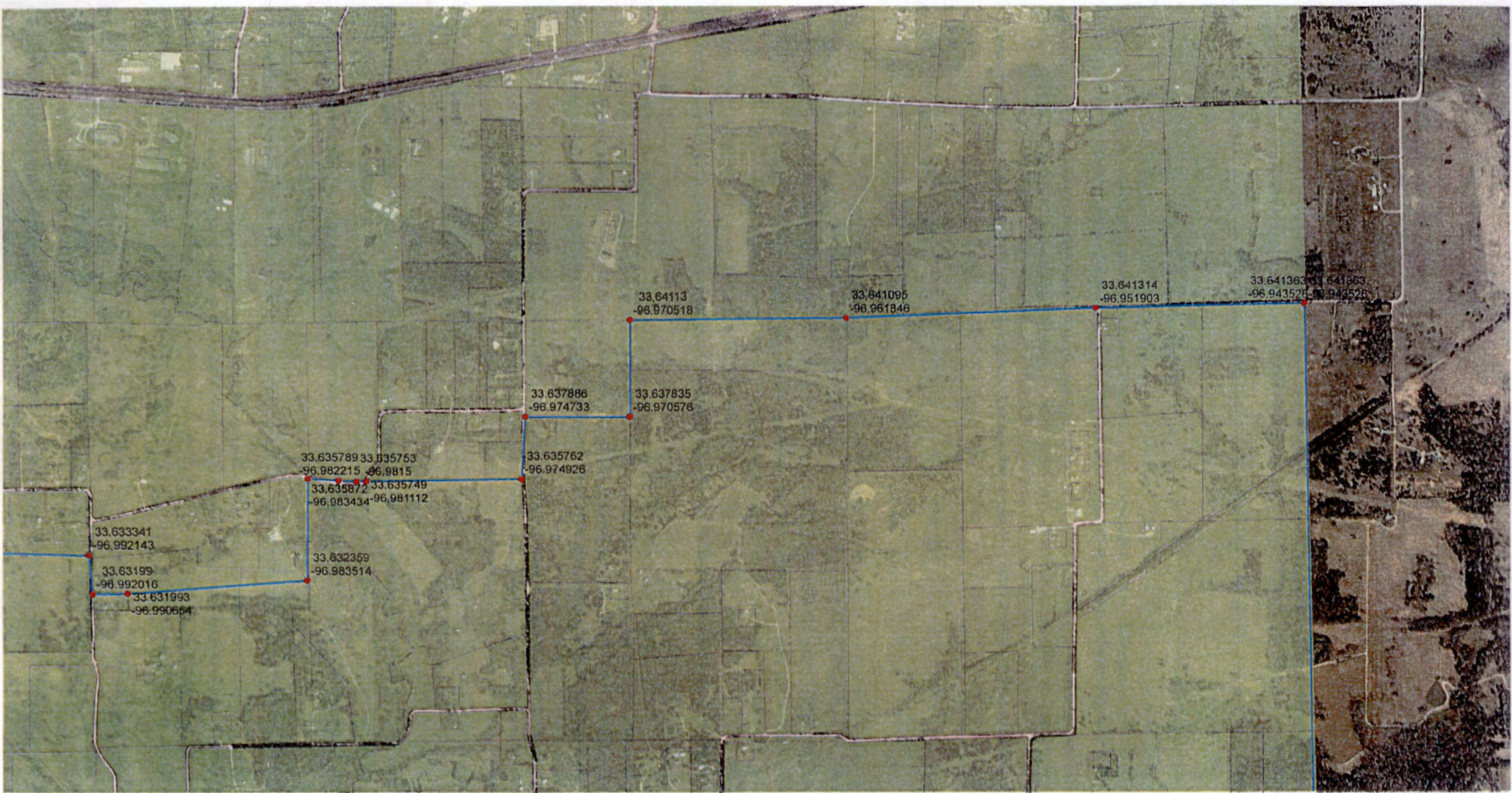
## Legend

● ICFD\_NEW\_POINTS

□ ICFD\_NEW









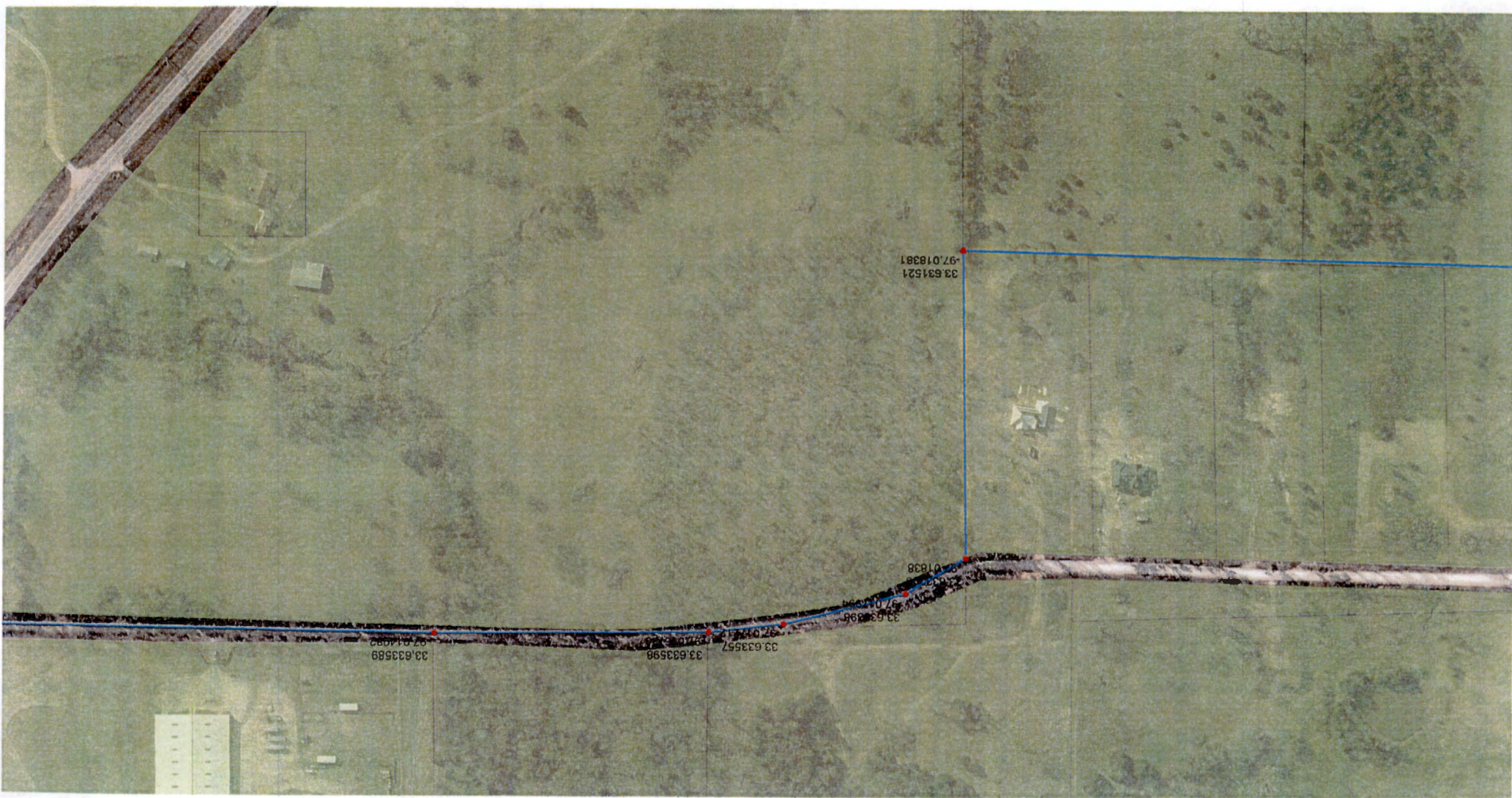
2











4







